



OAKFIELD



Eaton Close, Uckfield, TN22 1EQ

Price Guide £675,000



## Eaton Close, Uckfield, TN22 1EQ

GUIDE PRICE: £675,000 - £700,000

Tucked away within an exclusive enclave of just four executive homes, this exceptional four-bedroom detached residence effortlessly blends striking contemporary design with elegant family living. Built only recently and benefiting from the remainder of its 10-year new home warranty, the property enjoys a coveted south-facing position just a short stroll from Uckfield's vibrant High Street, excellent schools and beautiful countryside walks.

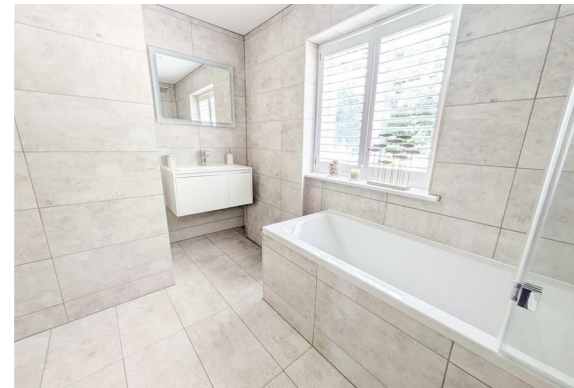
From the moment you step inside, the quality is undeniable. A welcoming entrance hall leads to beautifully appointed living spaces where underfloor heating and rich oak flooring create a seamless sense of warmth and sophistication throughout the ground floor.

To the front, the elegant lounge offers the perfect retreat, while the heart of the home lies to the rear. The stunning open-plan kitchen and dining space is flooded with natural light and centred around an impressive island, ideal for both everyday living and entertaining. A separate utility room, cloakroom and integral garage complete the practical layout.

Arranged over three floors, the accommodation offers flexibility and generous proportions throughout. The first floor hosts three beautifully presented bedrooms, including a guest suite with en-suite shower room, alongside a contemporary family bathroom. Occupying the entire top floor, the principal suite provides a luxurious private sanctuary with an indulgent bathroom and an abundance of space to unwind.

Outside, a private driveway provides off-road parking, while the landscaped south-facing garden creates a secluded outdoor haven, perfect for summer entertaining, family gatherings or simply relaxing in the sunshine.

A rare opportunity to acquire a stylish modern home in one of Uckfield's most desirable private developments, offering luxury, practicality and timeless design in equal measure.





### Living Room

17'2" x 12'2" (5.23m x 3.71m)

### Kitchen/Breakfast Room

20'8" x 14'8" (6.30m x 4.47m)

### Bedroom One

14'0" x 12'6" (4.27m x 3.81m)

### Bedroom Two

13'2" x 12'5" (4.01m x 3.78m)

### Bedroom Three

12'3" x 8'7" (3.73m x 2.62m)

### Bedroom Four

12'3" x 8'6" (3.73m x 2.59m)

### Utility Room

### WC

### Bathroom

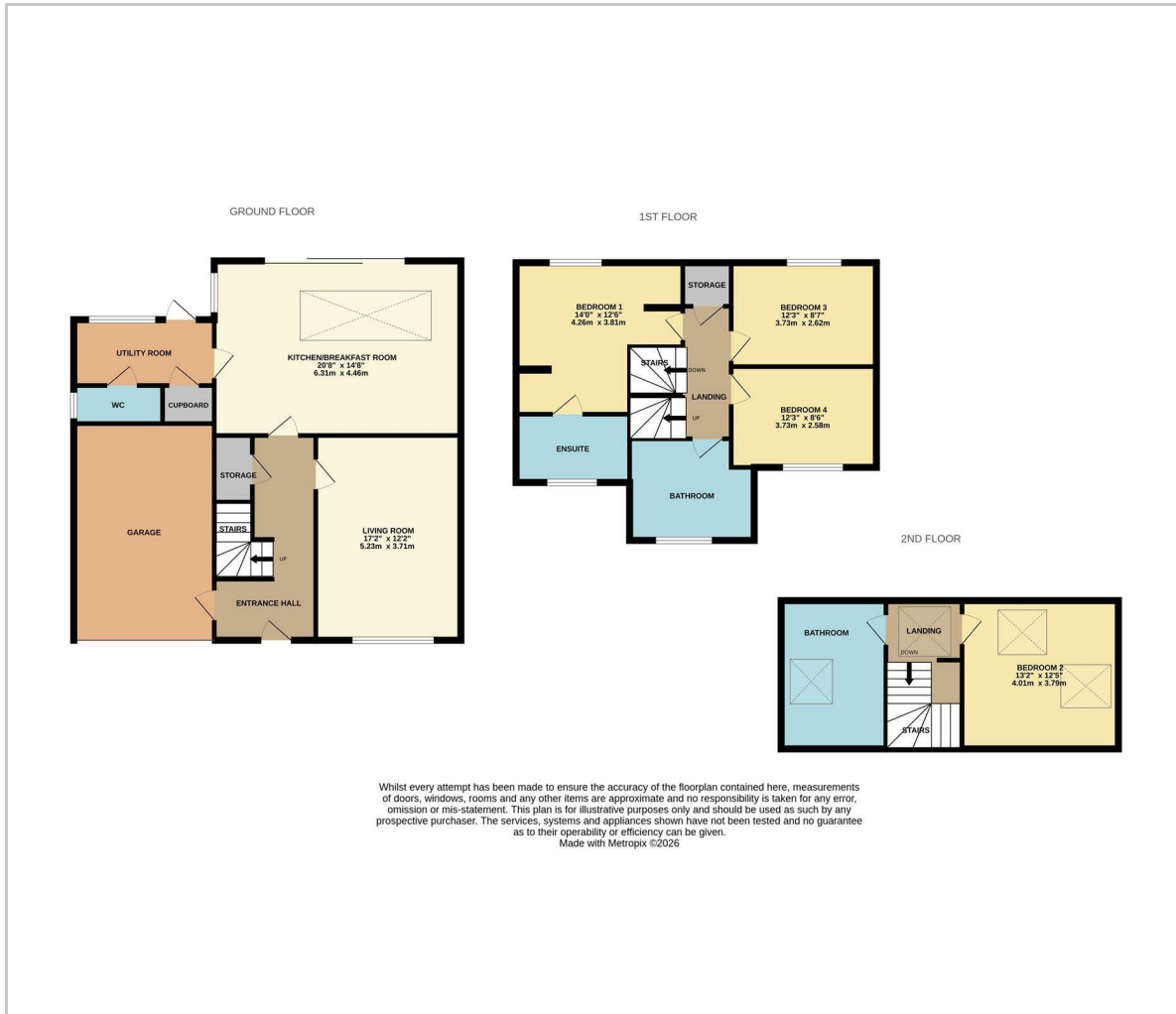
### Bathroom

### Ensuite

### Garage

Council Tax Band F - £3,941.07 Per Annum

## Floor Plan



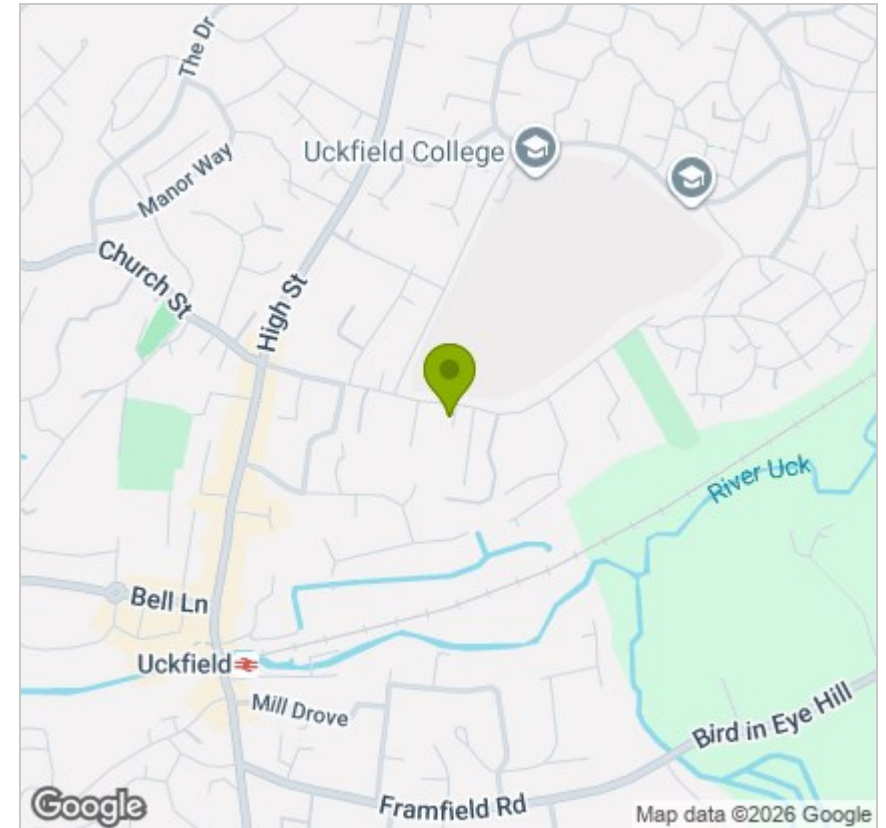
## Viewing

Please contact us on 01825 762132 if you wish to arrange a viewing appointment for this property or require further information.

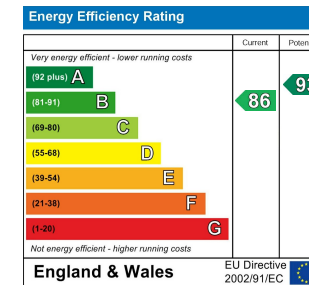
These particulars, whilst believed to be accurate are set out as a general outline only for guidance and do not constitute any part of an offer or contract. Intending purchasers should not rely on them as statements of representation of fact, but must satisfy themselves by inspection or otherwise as to their accuracy. No person in this firm's employment has the authority to make or give any representation or warranty in respect of the property.

108-110 High Street, Uckfield, East Sussex, TN22 1PX  
 uckfield@oakfieldproperty.co.uk

## Area Map



## Energy Efficiency Graph



01825 762132  
 www.oakfieldproperty.co.uk